



Salt Lake Area GIS Users Group

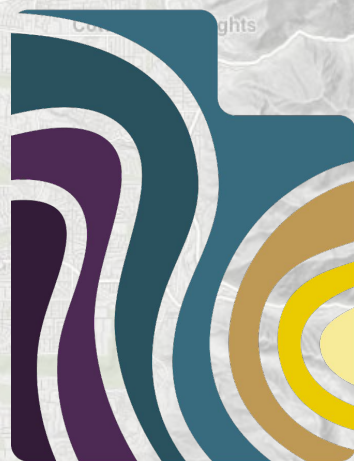
The UGRC Times

smorgasbord
edition

Vol 1

All the news (and acronyms) you need to know from Utah's state geospatial shop

\$5.00



UGRC

Utah Geospatial Resource Center



Greg Bunce
gbunce@utah.gov
ugrc@utah.gov



The UGRC Times

smorgasbord
edition

Vol 1

Salt Lake Area GIS Users Group

All the news (and acronyms) you need to know from Utah's state geospatial shop

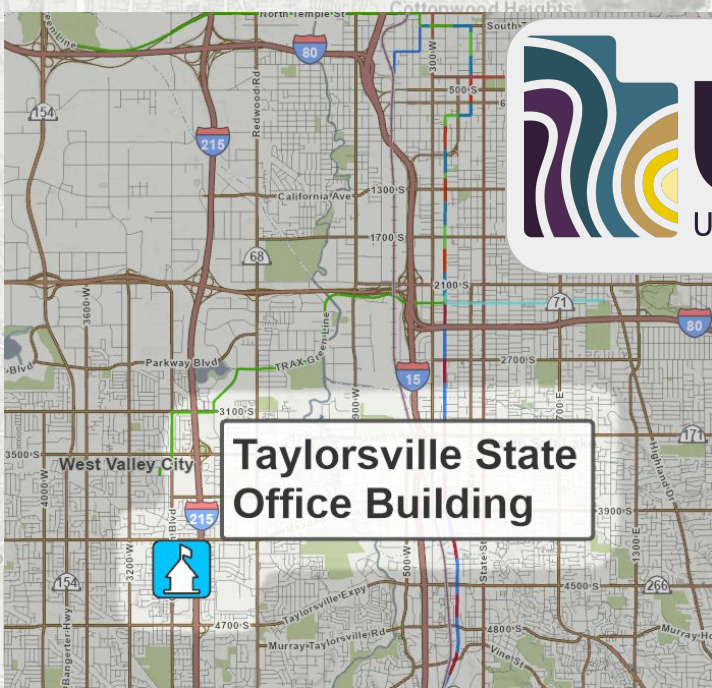
\$5.00

1 of 3 free articles this month

New logo, new name, new location, same url (gis.utah.gov)



4315 South 2700 West
Taylorsville, UT 84129 USA



Taylorsville State
Office Building



2021 Aerial Photography Acquisition Completed

- statewide 60cm 4-band imagery from the NAIP program (available for download now)
National Agriculture Imagery Program
- 15cm (~6in) imagery for our licensed users
- With fires, smoke, and a pandemic, this year's acquisition was a challenging one
- Please be patient as we will provide services of the new imagery as soon as possible

More information

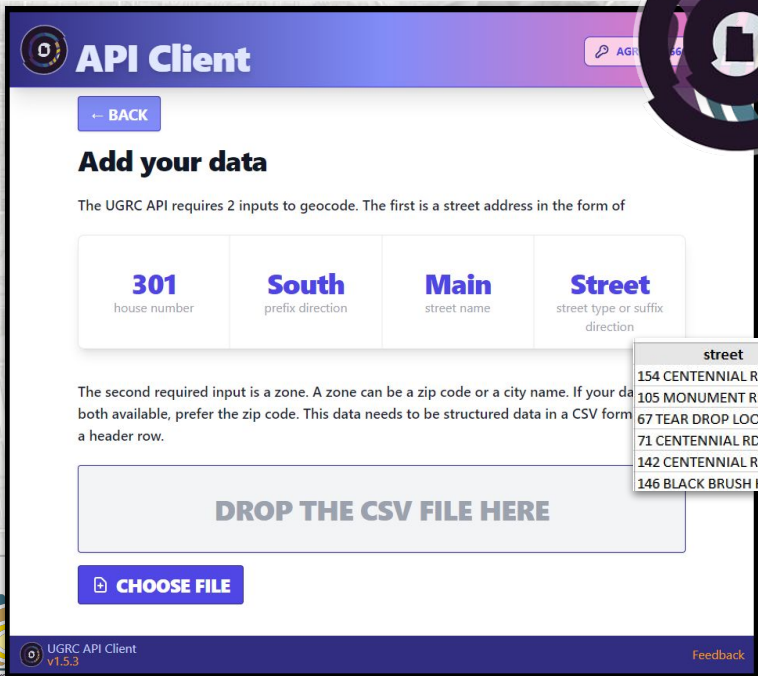
<https://gis.utah.gov/data/aerial-photography>

<https://gis.utah.gov/discover>

<https://gis.utah.gov/discover/license>

New API Desktop Client! Geocoding made easy

3 of 3 free articles this month
LAST FREE ARTICLE THIS MONTH
PLEASE SUBSCRIBE



API Client

← BACK

Add your data

The UGRC API requires 2 inputs to geocode. The first is a street address in the form of

301 house number	South prefix direction	Main street name	Street street type or suffix direction
----------------------------	----------------------------------	----------------------------	--

The second required input is a zone. A zone can be a zip code or a city name. If your data is both available, prefer the zip code. This data needs to be structured data in a CSV form with a header row.

DROP THE CSV FILE HERE

CHOOSE FILE

UGRC API Client v1.5.3

Location matters

Feedback



- User-friendly
- Cross-platform (Windows and macOS)
- No license
- Automatic updates (evergreen)
- plug and play
- drag and drop

street	zone	x	y	score	match_address
154 CENTENNIAL RD	84536	-110.1277805	36.99849144	100	154 CENTENNIAL RD, BLANDING
105 MONUMENT RD	84536	-110.1339016	36.99876812	100	105 MONUMENT RD, BLANDING
67 TEAR DROP LOOP	84536	-110.1845248	36.99950781	100	67 TEAR DROP LOOP, BLANDING
71 CENTENNIAL RD	84536	-110.1265563	36.99917329	100	71 CENTENNIAL RD, BLANDING
142 CENTENNIAL RD	84536	-110.1302544	36.99945742	100	142 CENTENNIAL RD, BLANDING
146 BLACK BRUSH HILL RD	84536	-110.8116292	37.00262061	100	146 BLACK BRUSH HILL RD, BLANDING



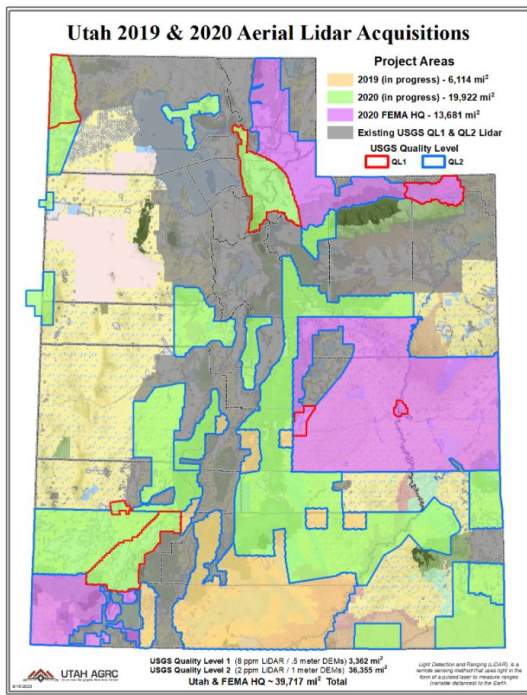
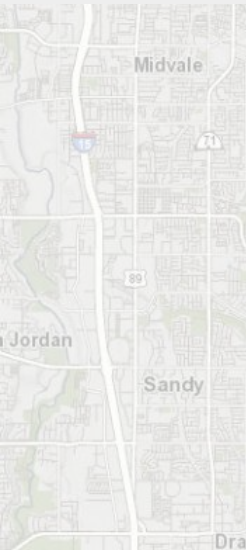
More information

<https://gis.utah.gov/introducing-the-official-ugrc-api-client>
<https://github.com/agrc/api-client>

2020 LiDAR

Light Detection and Ranging

3 of 3 free articles this month
PLEASE USE INCOGNITO
TO BYPASS THE PAYWALL



All other 2020 projects are finalized
and available*

**With the exception of the 2020 FEMA Headquarters
project estimated to be completed 6/30/2022*

More information

<https://gis.utah.gov/data/elevation-and-terrain>

<https://gis.utah.gov/2020-utah-lidar-acquisition>



The UGRC Times

smorgasbord
edition

Vol 1

Salt Lake Area GIS Users Group

All the news (and acronyms) you need to know from Utah's state geospatial shop

\$5.00

SGID

State Geographic Information Datasource

3 of 3 free articles this month
PLEASE USE INCOGNITO
TO BYPASS THE PAYWALL



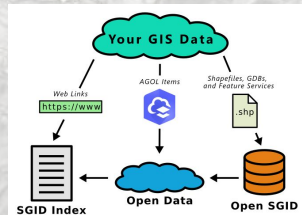
SGID

STATE GEOGRAPHIC
INFORMATION DATASOURCE

SGID turned 30 years old in 2021

Open SGID & Open Data

PostgreSQL PostGIS ESRI Hub site



Data sharing and contributing

Sharing through Index and/or hosted services



More information

<https://gis.utah.gov/introducing-open-sgid> (open sgid)

<https://opendata.gis.utah.gov> (open data)

<https://gis.utah.gov/sharing> (share/contribute)

<https://gis.utah.gov/sgid-then-and-now> (SGID history)



Next-Generation 911 NG911

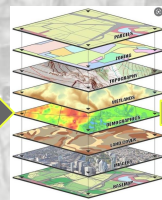
3 of 3 free articles this month
PLEASE USE INCOGNITO
TO BYPASS THE PAYWALL

UGRC/UCA



Geospatial validation and call routing

- *PSAP boundaries
 - Law Enforcement
 - EMS
 - *Address Points
 - *Road Centerlines
- (or MSAG)



GIS
Data



PSAP (dispatch center) maps

- SGID data
- UGRC basemaps

More information

- * <https://gis.utah.gov/ugrc-ng911-update>
- * <https://gis.utah.gov/automating-next-generation-911-law-enforcement-boundaries>
- * <https://gis.utah.gov/utah-ng911-gis-roadmap-v1>

New Political Districts 2020 Census

3 of 3 free articles this month
PLEASE USE INCOGNITO
TO BYPASS THE PAYWALL

2022 to 2032 (for use in upcoming general 2022 election)

- US Legislative
- US Congressional
- Utah State House
- Utah State Senate
- Utah State School Board



Updated voting precincts

Census Data

PL 94-171 Summary Files

Public Law



More information

<https://gis.utah.gov/census-2020-redistricting-data>

<https://gis.utah.gov/data/political/2022-2032-house-senate-congressional-districts>

Geospatial Maturity Assessment 2021 GMA

3 of 3 free articles this month
PLEASE USE INCOGNITO
TO BYPASS THE PAYWALL



GEOSPATIAL MATURITY ASSESSMENT 2021

Utah Report Card

Overall Grade: B

COORDINATION	GRADE: A
STATE-LED THEMES	
Address	A
Cadastral	A
Elevation	B
Orthoimagery Leaf-Off	D-
Transportation	A
FEDERAL-LED THEMES	
Geodetic Control	A-
Government Units	A
Hydrography	C
Orthoimagery Leaf-On	C

METRICS:

A - Superior

C - Average

F - Failure

B - Above average

D - Below average

N/A - Not Applicable

The National States Geographic Information Council Geospatial Maturity Assessment provides NSGIC members and other partners with a summary of geospatial initiatives, capabilities, and issues within and across state governments. The NSGIC GMA now produce report cards for each state on central data themes and coordination topics. The assessment is performed every two years.

- Coordination
- Address points
- Cadastre
- Transportation
- Governmental Units
(...boundaries data, Census BAS, etc.)

More information

<https://www.nsgic.org/geospatial-maturity-assessment>



Salt Lake Area GIS Users Group

The UGRC Times

smorgasbord
edition

Vol 1

All the news (and acronyms) you need to know from Utah's state geospatial shop

\$5.00

Stay Connected and up to date

3 of 3 free articles this month
PLEASE USE INCOGNITO
TO BYPASS THE PAYWALL

Newsletter

<https://gis.utah.gov>

Stay informed with our mailing list

subscribe

Twitter

@MapUtah

Podcast

Utah Geospatial Podcast



Previous episodes:

- Health
- Public Lands
- Natural Resources
- Land Surveyors

Greg Bunce
gbunce@utah.gov
ugrc@utah.gov